

Lake Brantley High School Marching Patriots

Uniform News

2011-2012

Website: www.patriotband.org

Inside this issue:

Casual Uniforms	2
Concert Uniforms	2
Dry Cleaners	3
Help Wanted	3
Marching Uniforms	1
Parent Shirts	3
Patriot Closet	4
Price Lists	2
Start-up Cost	4
Student Accounts	2

Uniform Committee

Cerise Seay
407-682-3152
ces@vanson.net

Brenda Beard
407-402-5979
brendabeard@cfl.rr.com

Words to play by!

**“To be on time,
is to be late.”**

- Ms. Berry

Welcome to Lake Brantley’s Band

Welcome to the Lake Brantley Patriot Band. We have a proud tradition of excellence both on field and on stage.

The band wears three different uniforms depending on the occasion. There is one for marching season, one for casual events and one for concert season.

This newsletter will give you information on all our uniforms.

Our committee’s contact information is listed to the left. Please e-mail/call us with any questions.

We are excited about our coming year and happy that you will be a part of it!



Marching Uniforms

The marching uniform is a patriot style uniform with jacket, bibbers (pants), and a three cornered hat. The hat, jacket, bibbers, shoe buckles and garment bag are loaned to the students. The fittings are by *appointment only* during uniform distribution nights in August.

Students are expected to dry-clean their uniform a minimum of every other wearing. White jackets worn by tubas and percussionists must be dry-cleaned every week. Dry cleaning receipts are turned into the section

leaders each week. There are only 3 approved dry cleaners and it is important to use these cleaners to avoid damage to the uniform. The three main pieces to the uniform total \$670, so extraordinary care is essential.

Each student is given a blue band bag their first year in the band. These are for band students only and are kept from year to year. They are carried into the stadium each game. Rain ponchos, extra gloves, extra socks, music, reeds, money for break and any other small items

which may be needed during the game go into this bag.

Students are responsible for purchasing LBHS band shorts, gloves, socks, “Bando” brand black marching shoes, and a poncho. These can be purchased during uniform distribution evenings. We will have most items on hand, but items we measure for such as shoes will be distributed during class once they arrive.

Students can purchase replacement gloves, socks and ponchos 30 minutes

Marching Uniforms *(continued from page 1)*

before leaving for each game.

The band participation fee paid at the beginning of the year covers operational costs during the year, the cost of band camp, and a band t-shirt which is distributed during band camp or the first week of class. These t-shirts are worn

with the band shorts under the bibbers and jacket as part of the marching uniform. The t-shirt is also worn for the homecoming parade.

At the end of marching season, the uniform must be dry-cleaned and returned in the dry-cleaning bag with the receipt at-

tached. Uniforms are returned by appointment during one of the marching uniform return nights. It is the student's responsibility to pay for any missing/damaged parts. A \$25 cleaning fee is assessed if the uniform is not returned clean and a \$25 late fee is assessed if the uniform is not returned on time.

Marching Uniform Replacement Costs	
Blue Coat	\$450.00
White Coat	\$150.00
Bibbers	\$150.00
Hat	\$68.00
Hat Box	\$3.00
Jacket Neck liner	\$10.00
Garment Bag	\$36.00
Buckles (each)	\$6.00

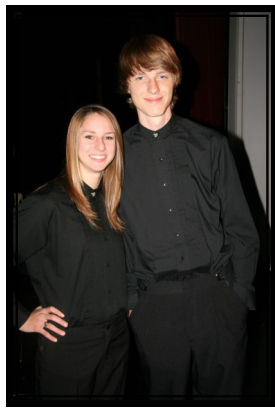
(All prices are subject to change based on our vendors pricing)

Casual Uniforms

The casual uniform is a blue polo shirt with band logo and either black jeans or tux pants depending on the event.

Students pay for their polo shirts and are sized during uniform distribution nights. The shirts are distributed during class once they arrive.

These only need to be purchased once unless the size changes or the shirt is lost.



Concert Uniforms

The concert uniform consists of black tuxedo pants with a black banded-collar tux shirt and a button cover. Students are required to purchase this uniform.

Students will be fitted for the shirt and pants during uniform distribution and we will collect payment at that time.

The students are responsible for wearing closed-toed black dress shoes (or Bando marching shoes without the shoe buckles from marching season) with black socks.

Student Accounts

The Band Boosters maintain student accounts for any student who would like to participate. The students fund their accounts by participating in student account fundraisers.

Parents and students cannot place money directly into the accounts. Money is earned only through the fundraisers. Our Assistant Treasurer and oversees the student accounts.

The account can be used to pay for band related items, including fees, uniforms, trips, etc.

Selling one entertainment book will place \$10.00 into a student's account. If a student comes to a game or concert and has forgotten socks, gloves or button covers, he/she can use the account to purchase the items. Having at least \$10.00 in a student account gives the

students a safety net for hectic Friday evenings.

When a student graduates, any unused money either transfers to a sibling's account or to the band's general scholarship account.

CONCERT PRICES	
Tuxedo Pants	\$29.00
Black Shirt with Button Cover	\$22.00
Xtra Button Cover	\$5.00

ADDITIONAL PRICES	
Shoes	\$22.00
Student Polo Shirt	*\$18.00 & up
White Socks	\$3.00
Gloves	\$2.00
1/2 Finger Gloves	\$3.00
Poncho	\$4.00
Shorts	*\$10.00 & up
Parent Polo Shirt	*\$20.00 & up
Parent Twill shirt	*\$25.00 & up

*(*Sizes 2XL and up cost more)*
These items will be paid for during uniform distribution nights in August.

Parent Shirts

Parents are encouraged to order parent shirts to wear when helping out with any band function. The shirts let the students know with a quick glance who to go to in case they need assistance.

These must be ordered during band camp registration as we only place one large order per year.

We offer two options for parent shirts. Each shirt comes embroidered with the parent logo shown to the right.



The first is a royal blue polo style shirt which comes in both ladies' and men's sizes. The second is a royal blue wrinkle resistant twill shirt. Men's shirts have button down collars with left chest pocket. Ladies' blouses have reverse

placket, no pocket and an open collar. All shirts are 60/40 Poly blend.

An order form is attached to this newsletter. If you want to order a shirt please return it and your payment with your band camp registration.

Approved Dry Cleaners

- ✓ Sunland Cleaners
(Wekiva Springs Rd. & Fox Valley)
- ✓ Hunt Club Cleaners
(Hunt Club Blvd next to Tijuana Flats)
- ✓ Heart of Wekiva
(241 N Hunt Club Blvd.)

We Need Your Help



We have over 280 students in uniform at each appearance. It is a big job which is made infinitely easier by parent volunteers. This is an area where you can commit a little time and make a huge contribution!

- **Band Camp**—During the first few days of band camp, we will enter measurements collected for the students and pull uniforms for uniform distribution. We need 3 volunteers to help us with this. We also need help from parents with sewing expertise. Approximate times 1:30—4:00, 8/9, 8/10 & 8/11
- **Band Camp**—During the morning of the last day of band camp, we are planning to open the **Patriot Closet**, a store to sell gently worn uniform

parts. We could use a few parent volunteers to help with this store. Approximate times 8/12 10:00am—1:00pm

- **Uniform Distribution**—Will be held the second week of school on Tuesday, Wednesday and Thursday evenings 8/23, 8/24, and 8/25. We will fit each student for their marching uniform. We need about 20 people each evening to help with this process. Approximate times 5:45–8:45, some people volunteer for one or two nights, and some volunteer for all 3. We really appreciate whatever time you can spare.
- **Game nights**—We open a uniform store in the back of the band room before each game. We sell gloves, socks, ponchos, shorts, etc. and make small repairs on the uniforms. You will always be done in time to go and watch the game. Time—45 minutes prior to the students scheduled time of arrival—usually around 4:15 or 4:45.

- **Seamstresses**—We need people who have sewing expertise. Some work is done during the distribution and return nights, some before games, and some at home. It is a shared process.
- **Uniform Return**—We usually collect the uniforms in January over a two night period. We need about 15 people to help each evening. Approximate times 5:45—8:30.
- **Daytime Helpers**—If you have availability during the day, we need helpers to come in occasionally and distribute items like t-shirts, shoes, etc. We also need help keeping the uniform room clean and organized. This time is flexible.

If you can help with any of these, please call or email:

Cerise Seay, 407-682-3152
ces@vanson.net

Brenda Beard, 407-402-5979
brendabeard@cfl.rr.com

Start-up Cost : Bottom Line

Since many students already have black Bando brand shoes and black tuxedo pants from middle school, there isn't a bottom line which applies to all students across the board. Some students have hand me downs from siblings or friends and most students purchase 2 pair of gloves and 2 pair of socks during distribution.

The chart to the right lists all items an incoming freshman who does not have shoes and tux pants from middle school would purchase. To get an idea of what you can expect, subtract out the costs for the items you already have and add in the extra \$\$ for additional pairs of socks and gloves you might purchase. Both shirt & short sizes 2XL and greater will add an additional \$2.00 per size increment. Do not send a check in with registration. You will pay for these during your distribution appointment time in August.

These items are provided to band members at our cost, but if purchasing them is not within your financial means, please contact Ms. Berry, (407)746-3460 to make special arrangements. We want all students to be able to participate in band if they have the desire.

You will pay for these items during uniform distribution nights. This chart shows last year's prices and may change.

Item	Cost
Concert Shirt with Button Cover <i>(Black with banded collar)</i>	\$22.00
Black Tuxedo Pants <i>(same pants as Teague and Rock Lake)</i>	\$29.00
Bando Shoes <i>(same shoes as Teague and Rock Lake)</i>	\$22.00
Gloves (1 pair)	\$2.00
Socks (1 pair)	\$3.00
Poncho	\$4.00
Shorts	\$10.00
T-Shirt	Included in Band Fee
Blue Duffle Bag	Included in Band Fee
Student Polo Shirt (size < 2XL)	\$18.00
Total:	\$110.00

Want to know how to put those buckles on your shoes?

Go to our website, www.patriotband.org, and select **Uniform** from the top menu choices. The menu bar on the left side has a link to an instructional video. It will give you step by step instructions.

Patriot's Closet

On Friday morning, the last day of band camp, the uniform committee will open our gently used uniform parts store, Patriot's Closet. The store will be open from 10:00am to 12:30pm.

The inventory and sizes available will depend on what is donated the year before, but we should have a limited number of shoes, tux pants, polos, black shirts, and ponchos available for purchase.

If you have a pair of Bando shoes or tux pants that no longer fit, you can bring them in during this time for a trade-up at no cost, assuming you can find something used that fits.

There is no guarantee that the store will have your size, but the cost savings if we do may be worth a trip up to the band room to check it out!

Prices—Tux pants \$10.00, Shoes \$5.00, ponchos \$2.00, Shirts \$10.00.